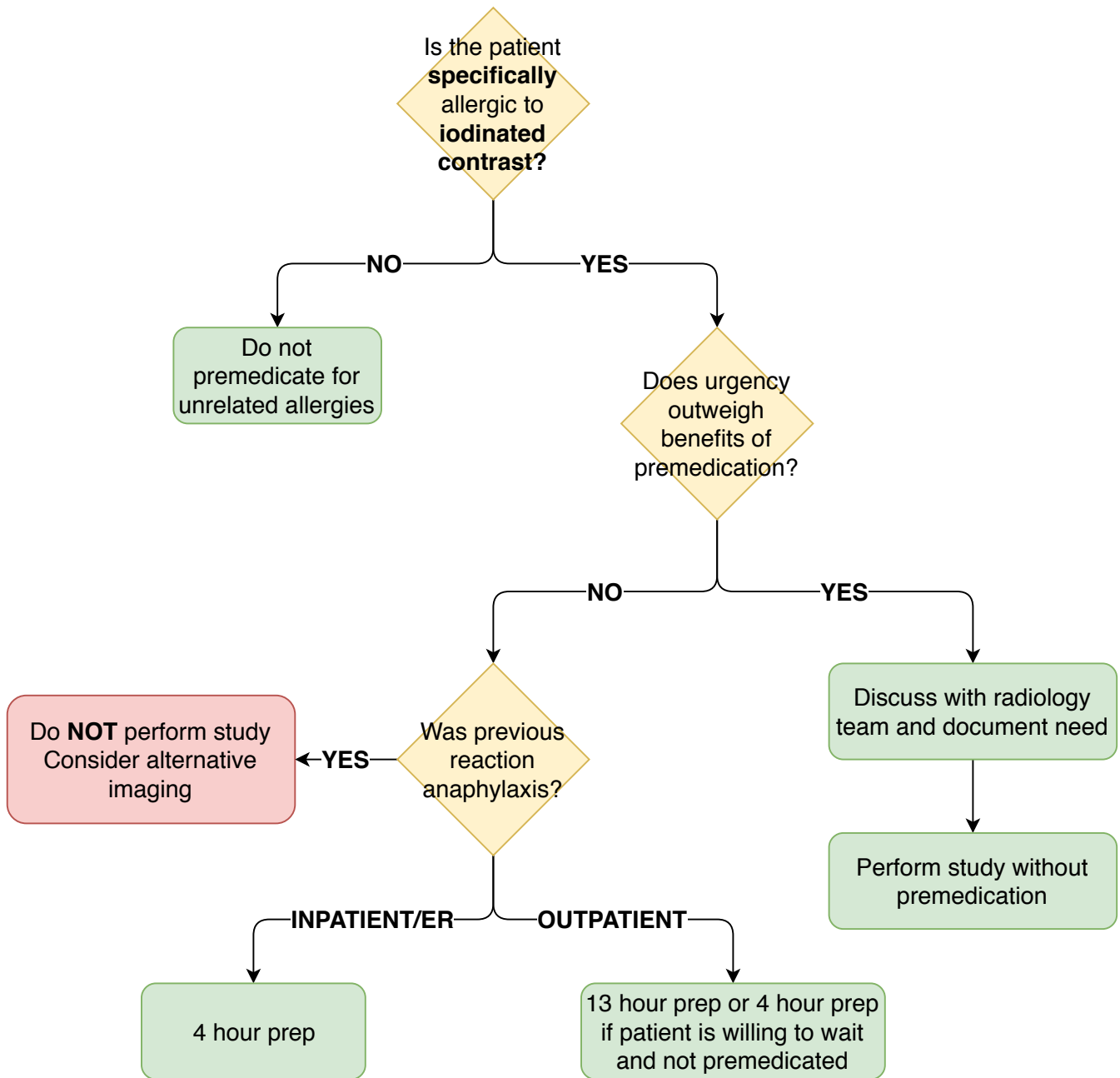


## Contrast Allergy Premedication



### Reference Allergy preparation

**13 hour prep:**  
 50 mg prednisone PO at 13, 7, and 1 hour prior  
 50 mg diphenhydramine IV/IM/PO 1 hour prior

OR

32 mg methylprednisolone PO at 12 and 2 hours prior  
 +/- 50 mg diphenhydramine IV/IM/PO 1 hour prior

**4 hour prep:**  
 Solu-medrol 40 mg IV  
 OR  
 Solu-Cortef 200 mg IV stat and Q4H until admin  
 OR  
 Decadron 7.5 mg IV stat and Q4H until admin

**PLUS**  
 diphenhydramine 50 mg IV 1 hour prior

**\*\*Patients with known allergy MUST have undergone prep for routine imaging\*\***